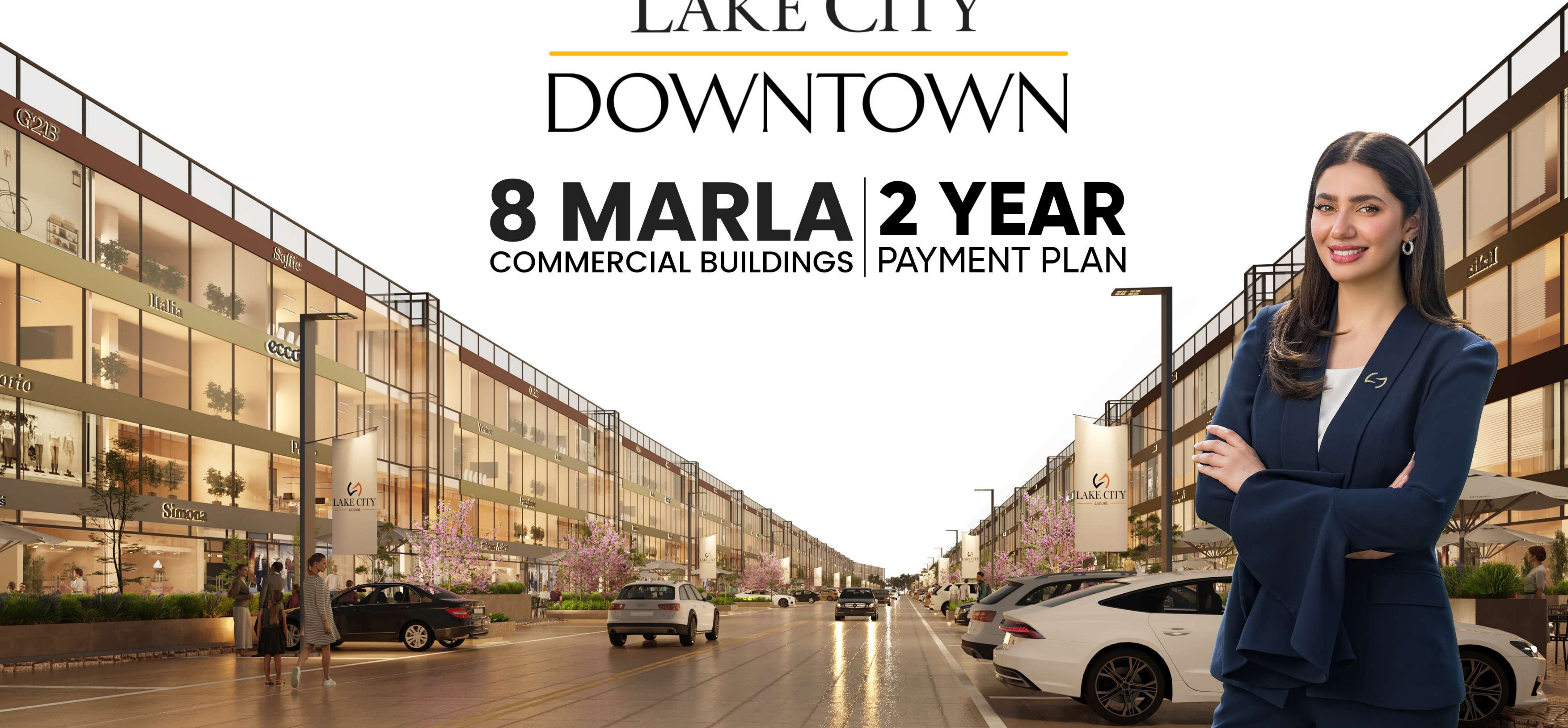




LAKE CITY DOWNTOWN

8 MARLA | 2 YEAR
COMMERCIAL BUILDINGS | PAYMENT PLAN



SALES CENTER

UAN: 042 111 000 096

BOOKING OFFICE

LAKE CITY HEAD OFFICE
13-KM RAIWIND ROAD, LAHORE



LAKE CITY INTERCHANGE, RING ROAD



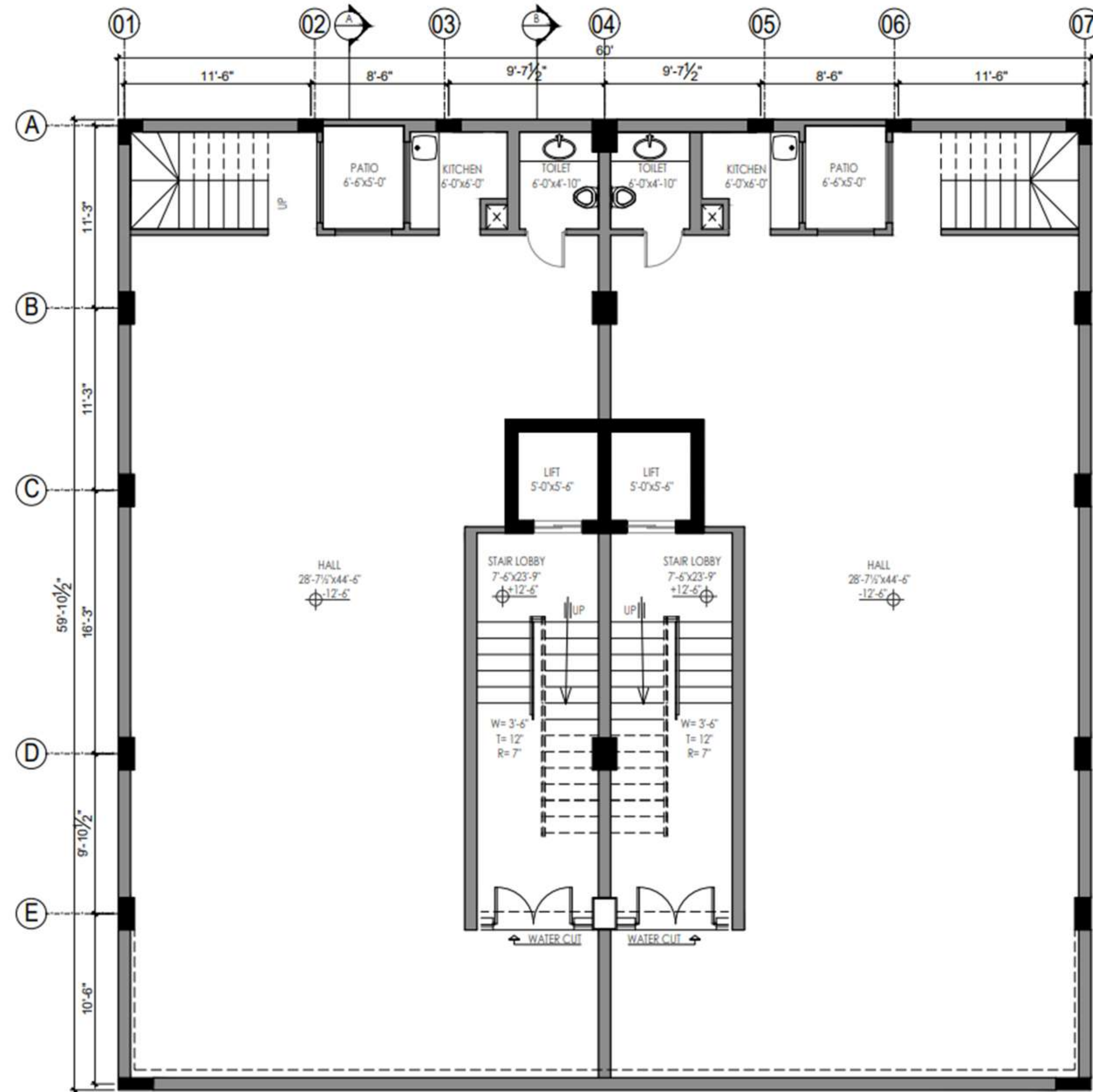
SALES CENTER

UAN: 042 111 000 096

BOOKING OFFICE

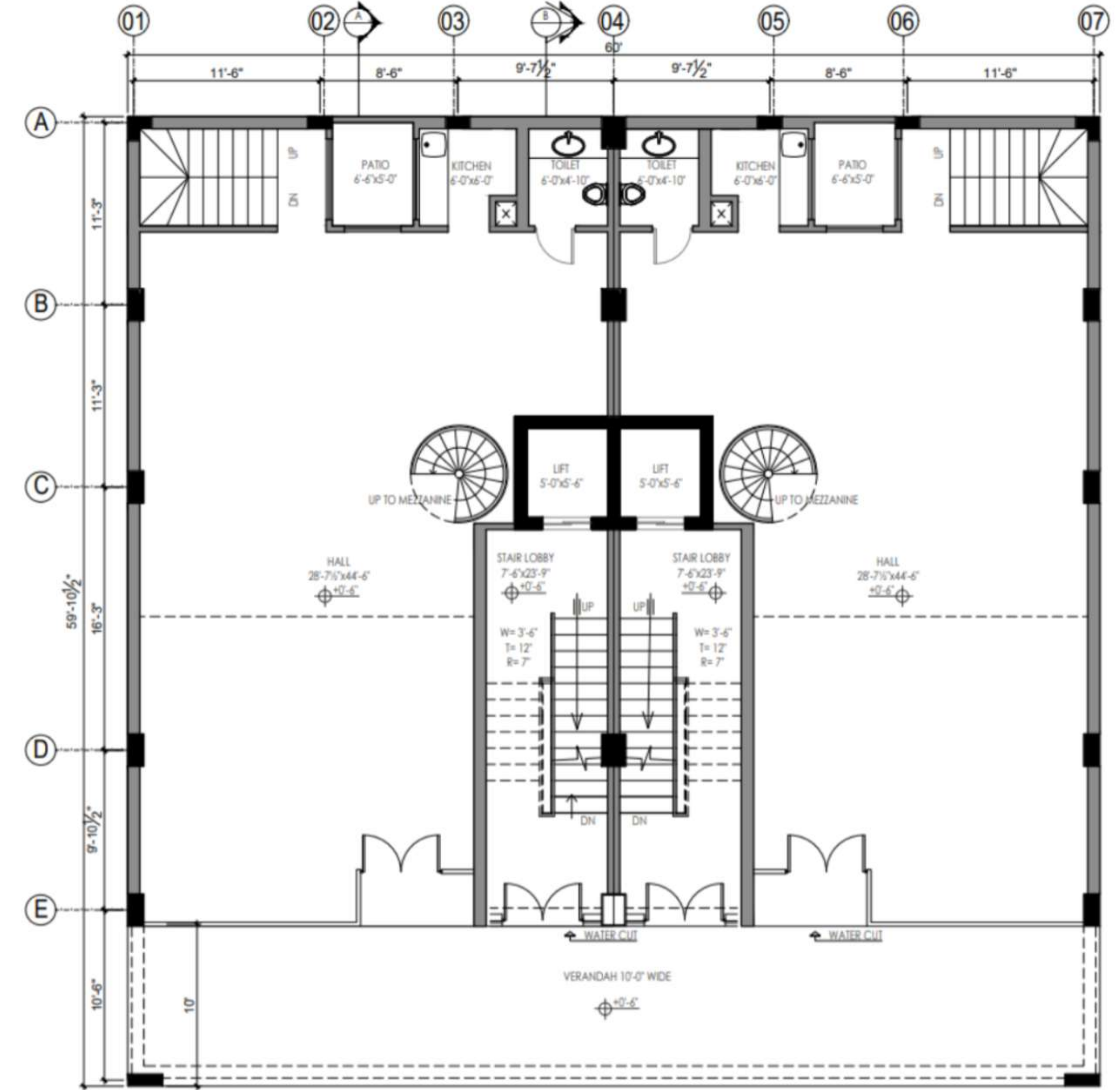
LAKE CITY HEAD OFFICE
13-KM RAIWIND ROAD, LAHORE

Basement Floor Plan :



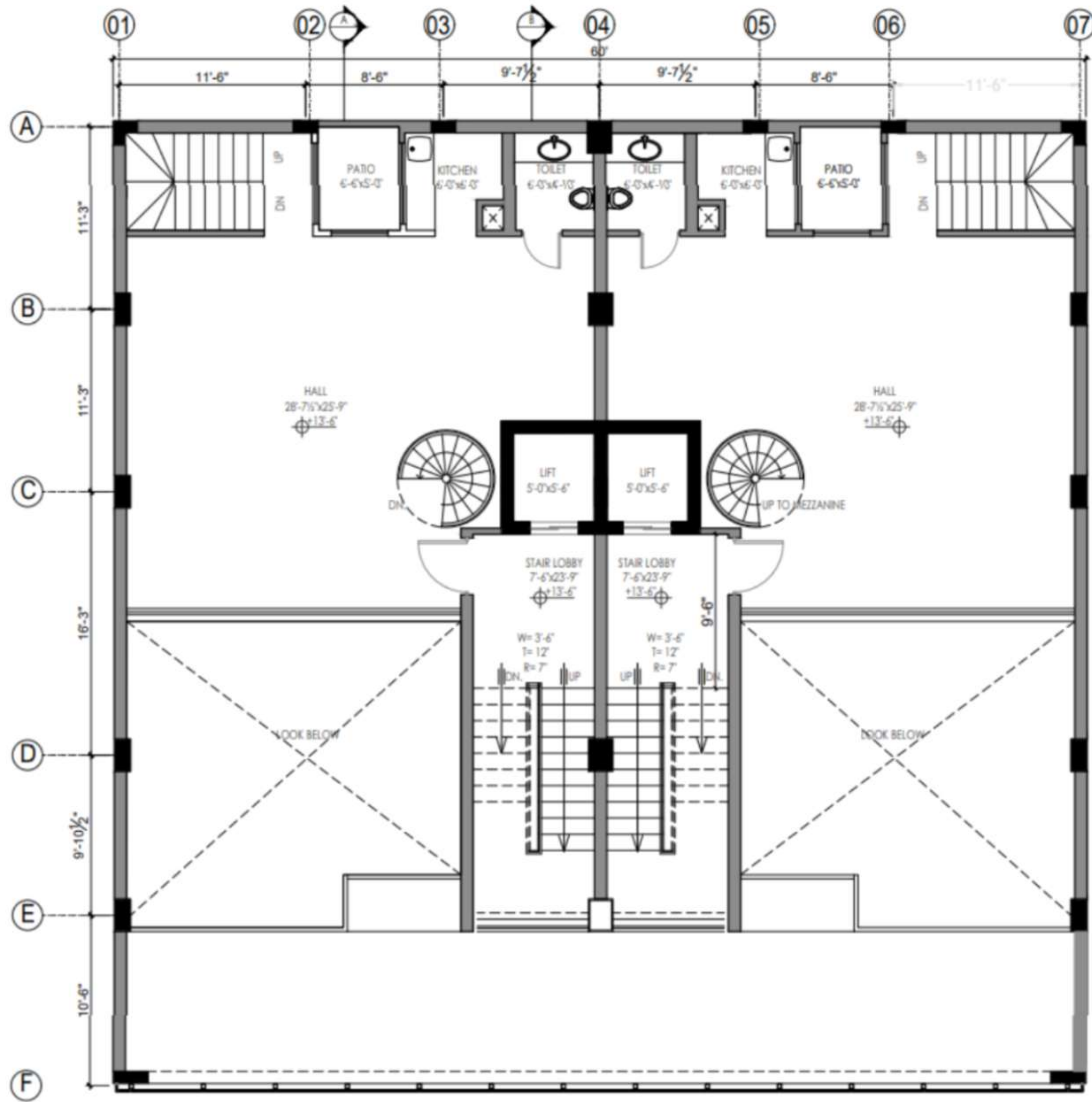
Covered Area = 1770 sqft

Ground Floor Plan :



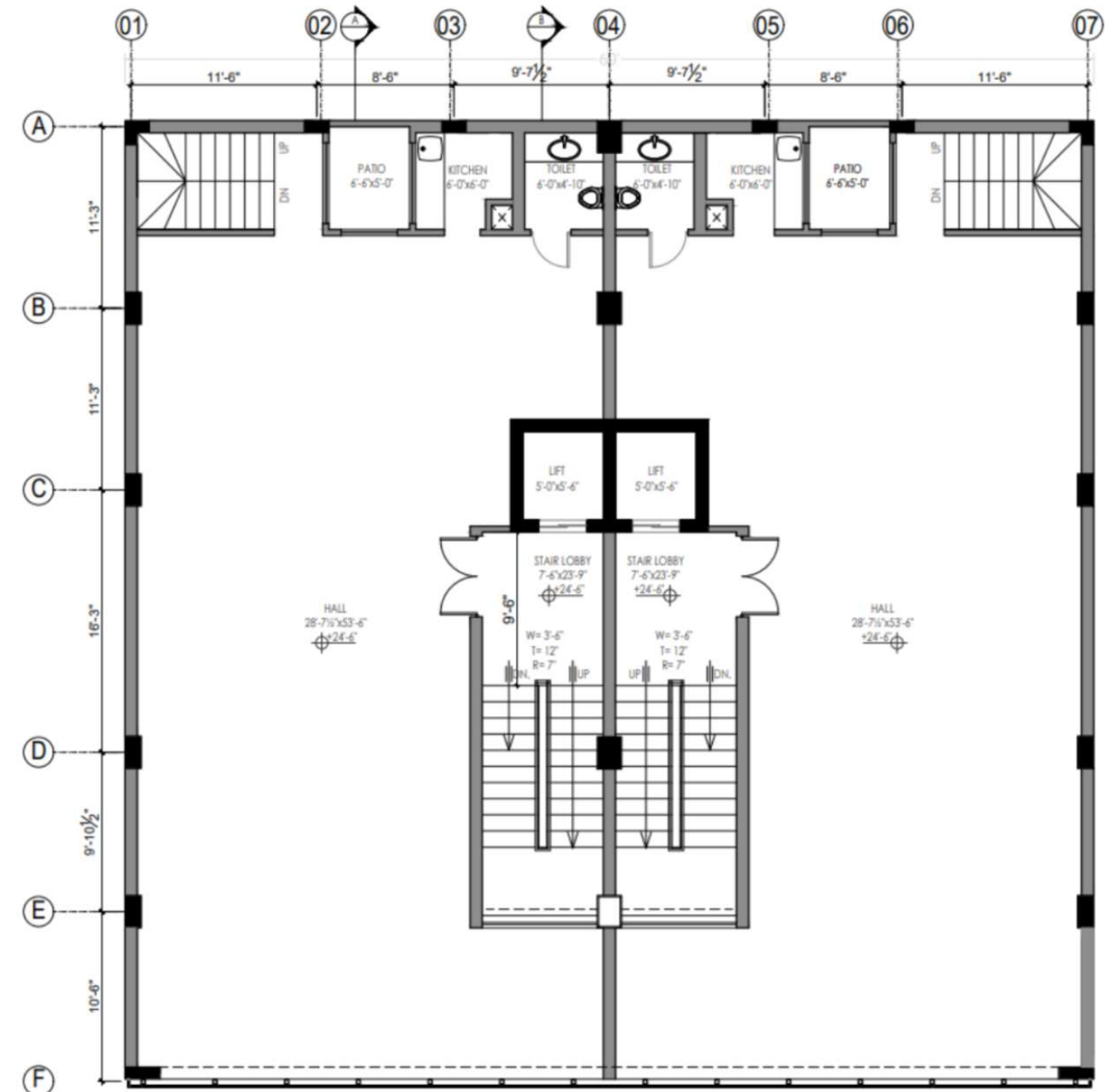
Covered Area = 1470 sqft

Mezzanine Floor Plan :



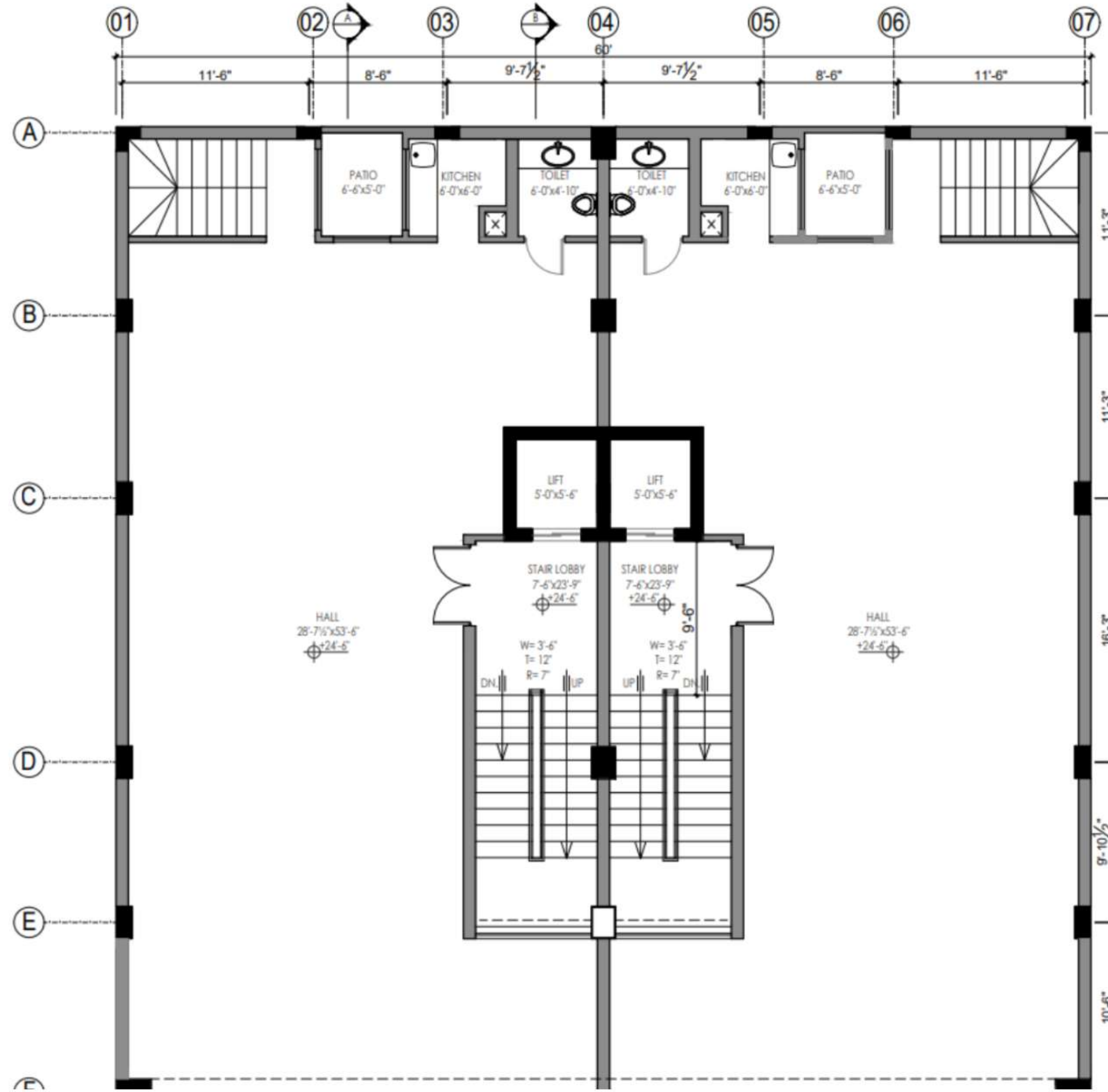
Covered Area = 1280sqft

First Floor Plan :



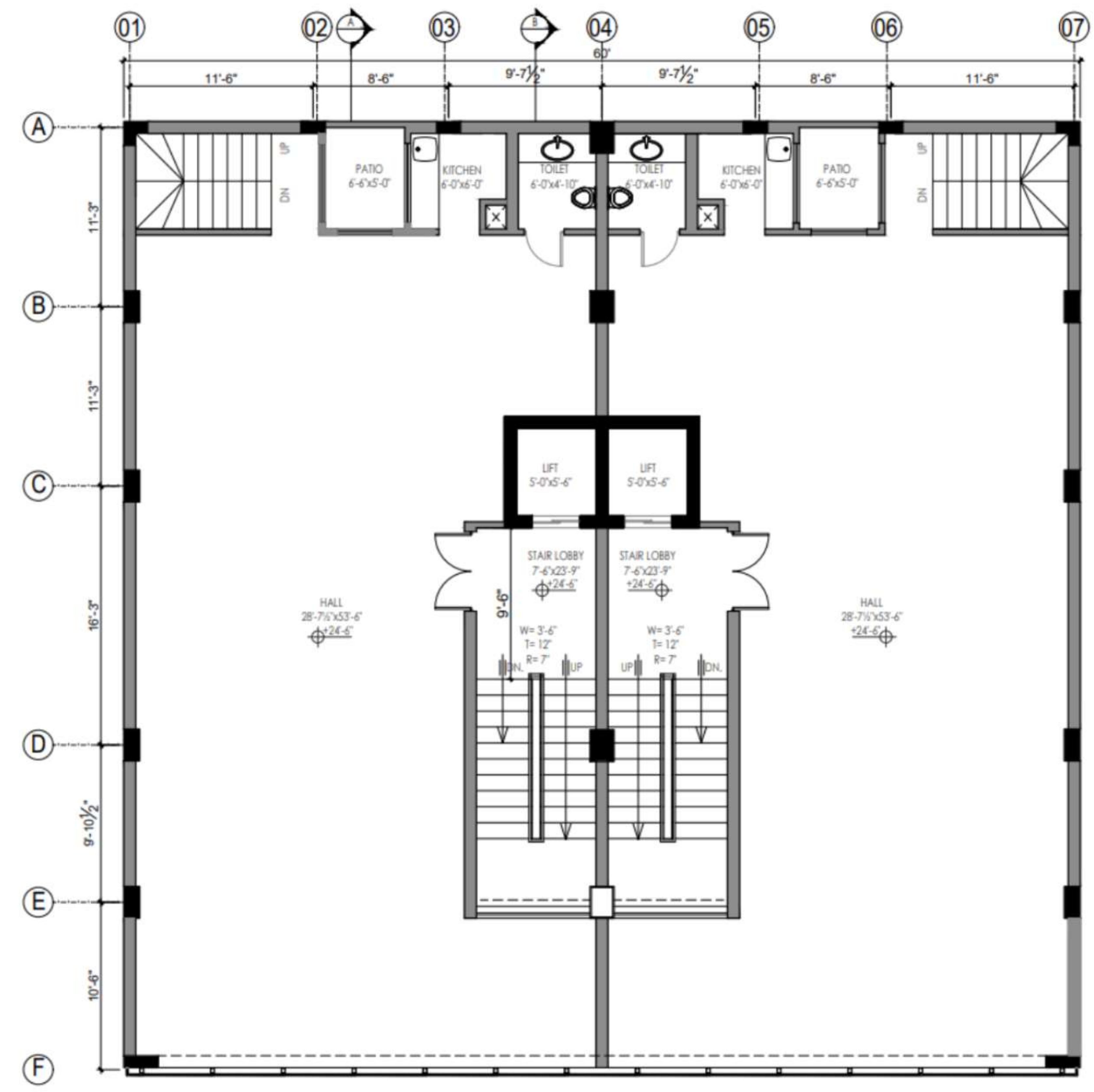
Covered Area = 1770 sqft

Second Floor Plan :



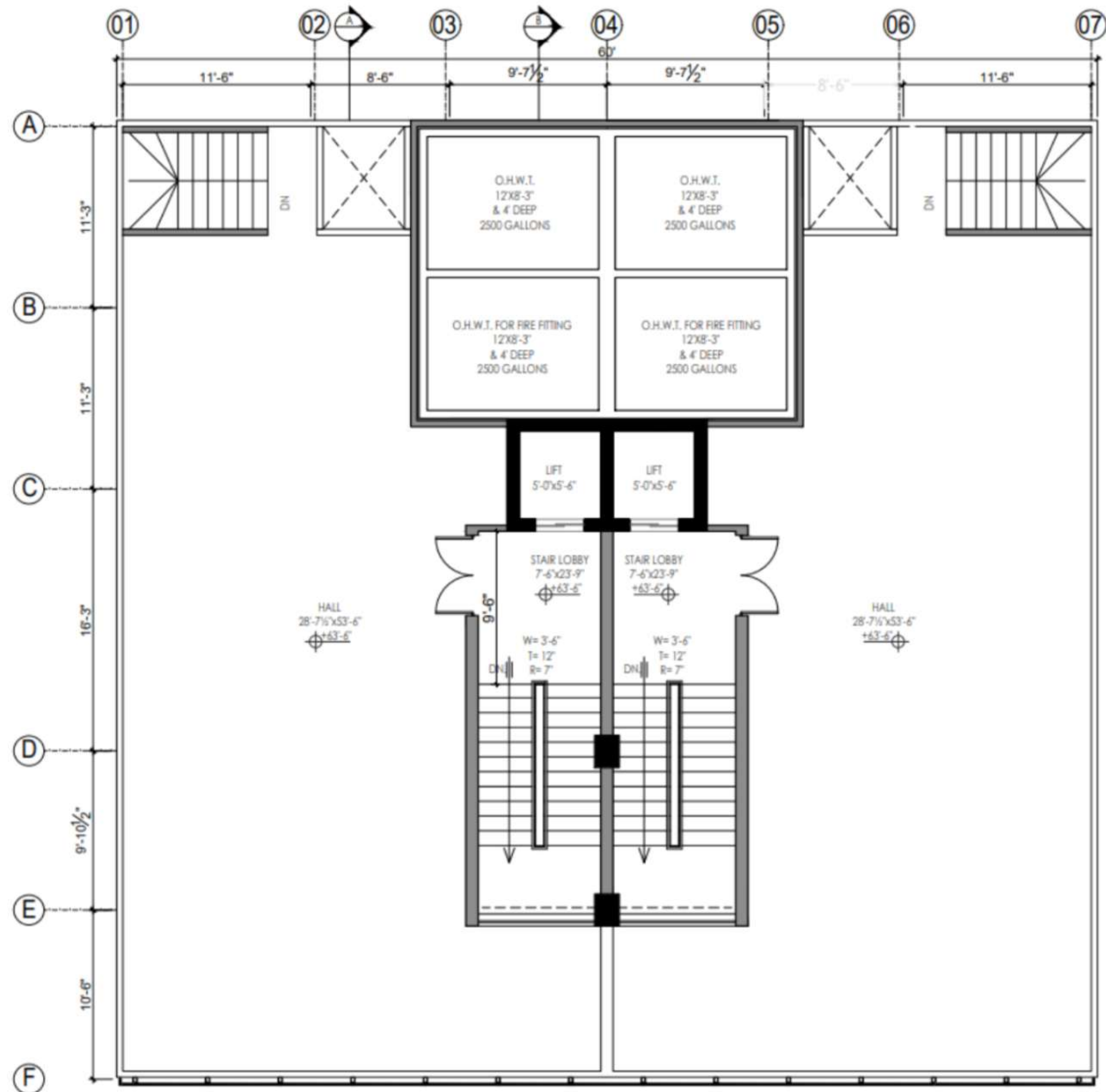
Covered Area = 1770sqft

Third Floor Plan :

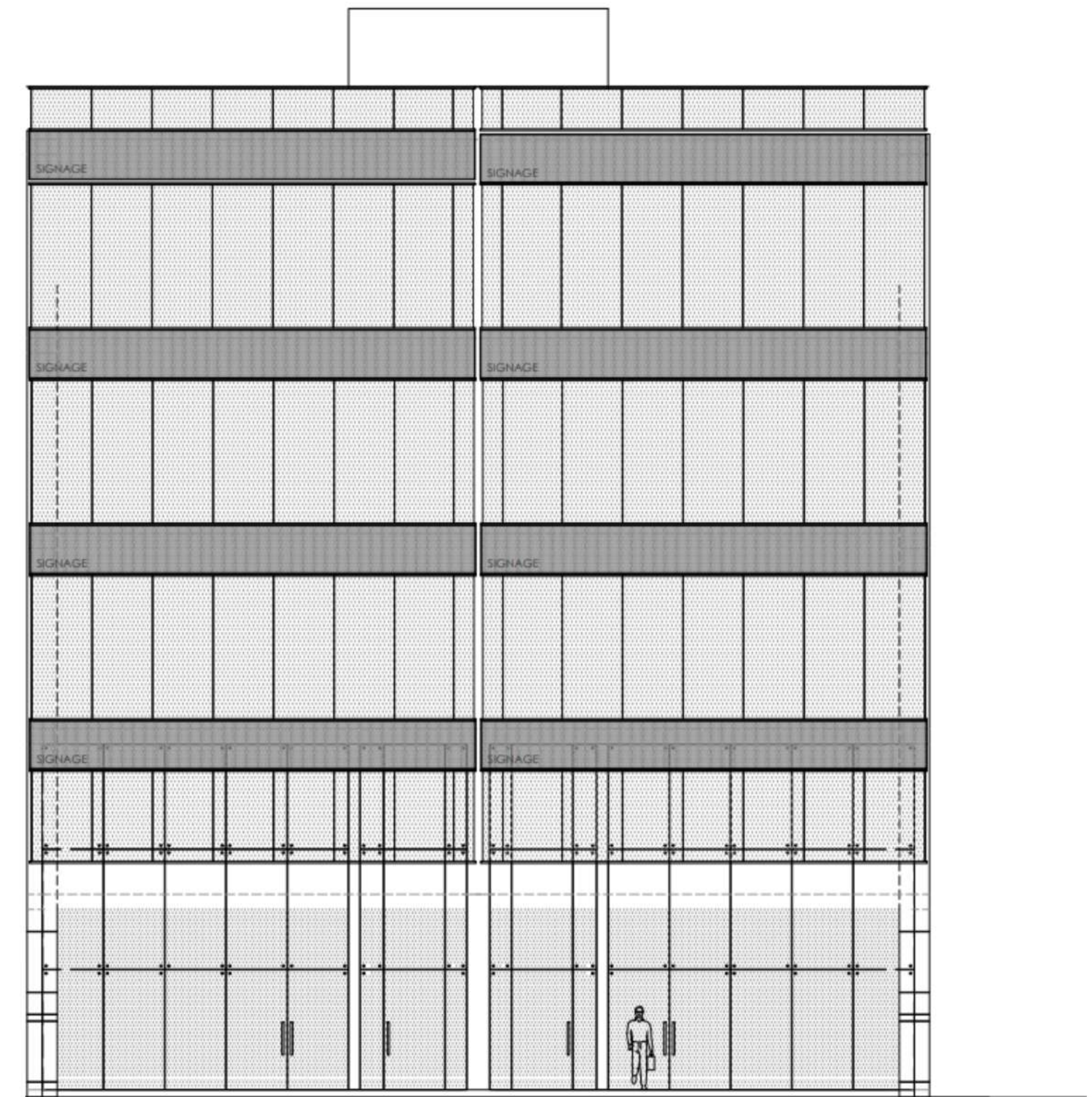


Covered Area = 1770 sqft

Roof Plan :



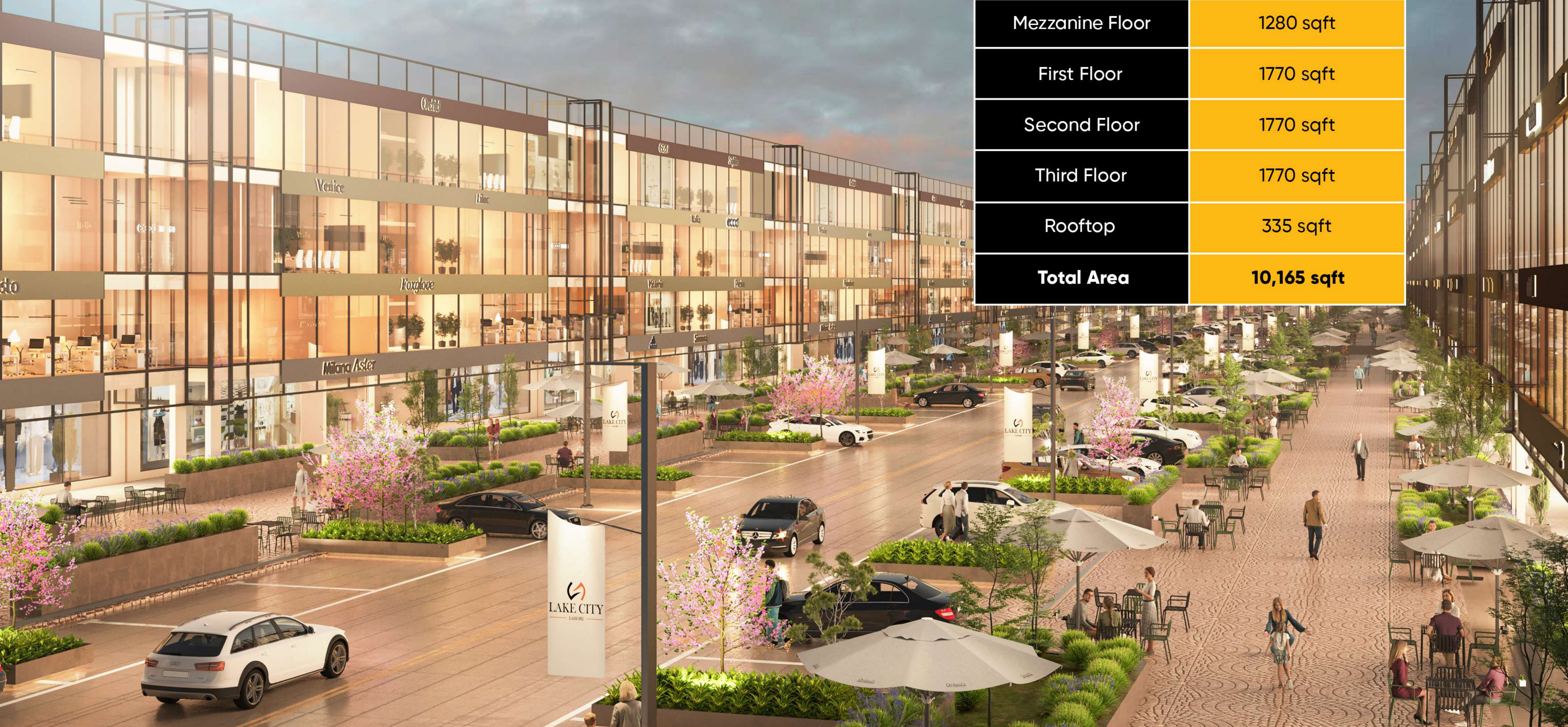
Covered Area = 335sqft



Elevation



LAKE CITY DOWNTOWN



Area Statement	
Floor	Covered Area
Basement Floor	1770 sqft
Ground Floor	1470 sqft
Mezzanine Floor	1280 sqft
First Floor	1770 sqft
Second Floor	1770 sqft
Third Floor	1770 sqft
Rooftop	335 sqft
Total Area	10,165 sqft

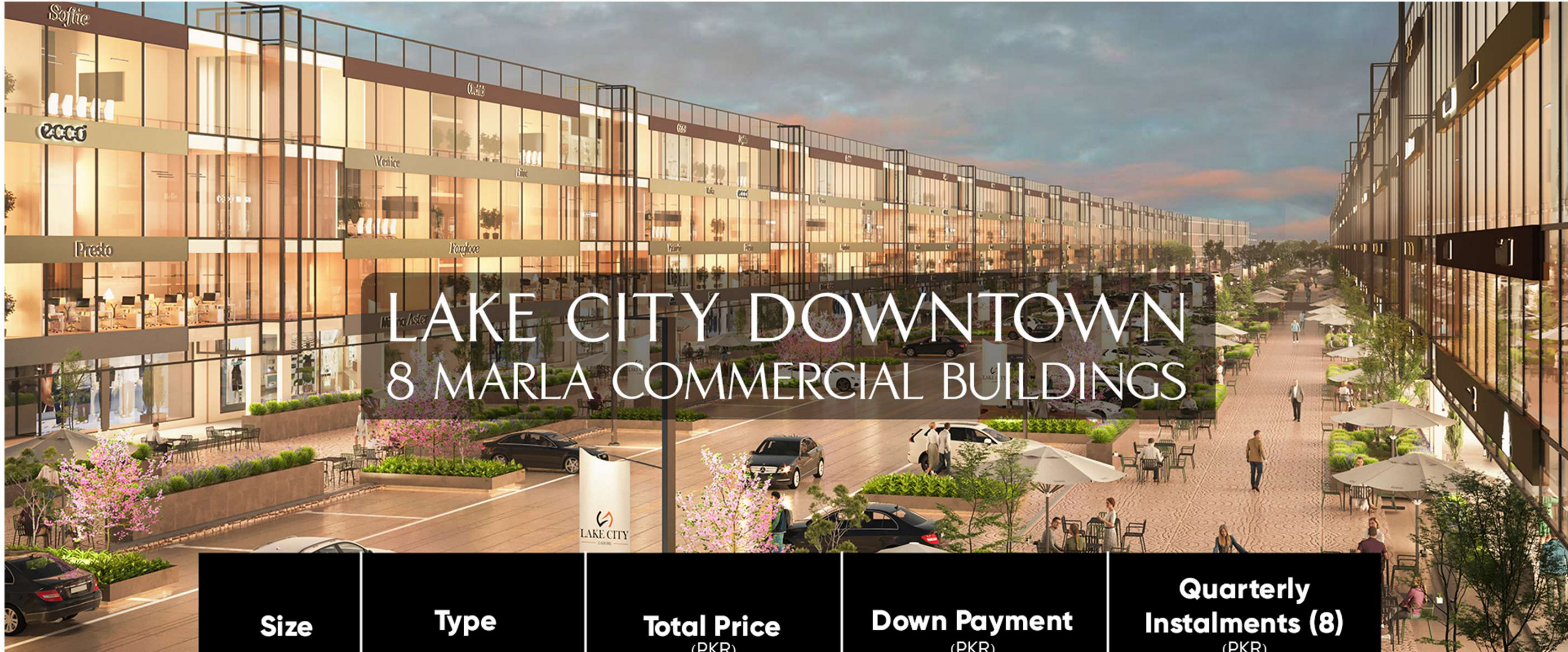
SALES CENTER

UAN: 042 111 000 096

BOOKING OFFICE

LAKE CITY HEAD OFFICE
13-KM RAIWIND ROAD, LAHORE

PAYMENT PLAN :



Size	Type	Total Price (PKR)	Down Payment (PKR)	Quarterly Instalments (8) (PKR)
08 Marla	Commercial	225,000,000/-	55,000,000/-	21,250,000/-

*Application Forms are available from Lake City Office (13-KM Raiwind Road, Lahore) on deposit of 10,000/-

*10 % Premium will be charges on Corner Building

*Applicable with Holding Tax to be Paid

SALES CENTER

UAN: 042 111 000 096

BOOKING OFFICE

LAKE CITY HEAD OFFICE
13-KM RAIWIND ROAD, LAHORE