



LAKE CITY
— LAHORE —

5 MARLA VILLAS



UAN : 042 111 000 096



LAKE CITY
LAHORE

**PAYMENT IN
5 YEARS**

**POSSESSION IN
1.5 YEARS**



5 & 7 MARLA VILLAS

DESIGNED BY NAYYAR ALI DADA

UAN - 042 111 000 096

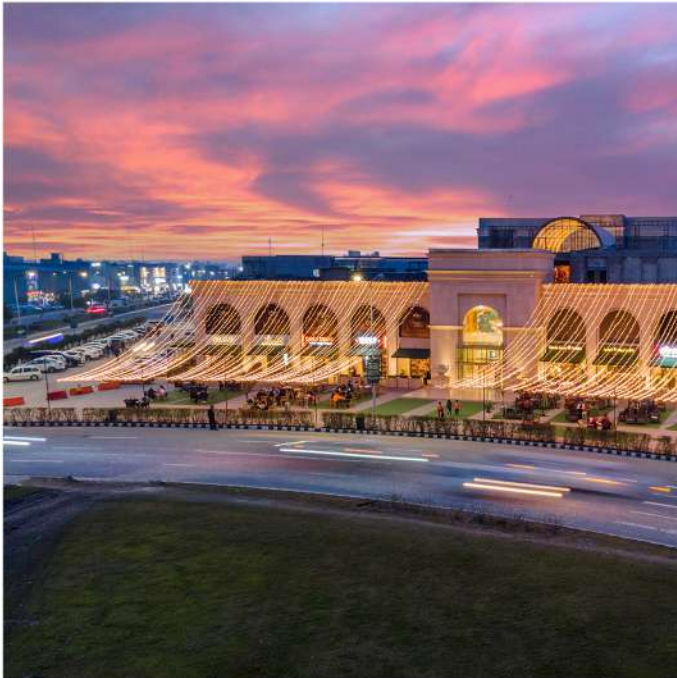




LAKE CITY

LAHORE

Far from the madding crowd, yet so close to the vicinity of Lahore. Located on the Lake City Ring Road Interchange. Lake City's supreme location brings the best of both worlds. Enjoy serenity and seclusion along with sophistication and amenities of an exclusive lifestyle within the secure environs of a gated community! Keeping up with our exclusive tradition of bringing the best of both worlds to you, we provide exclusive housing and lifestyle facilities.





Nayyar Ali Dada & Associates

Nayyar Ali Dada & Associates is an internationally acclaimed architectural practice established in 1978. The founder of NADA, Mr. Nayyar Ali Dada is a living legend of Pakistan and has received the honourable Hilal-e-Imtiaz by the Government of Pakistan. Throughout the firm's working history, it has served notable clients and produced a vast portfolio that spans across the private and public sectors. Due to a number of sensitive public projects, the firm enjoys a strong and highly respectable position as a leading design firm in Pakistan.



Nayyar Ali Dada



Lake City Grand Jamia Mosque, Lahore



Bahria Jamia Mosque, Lahore



Qaddafi Stadium, Lahore



Raza Ali Dada



Supreme Court Museum, Islamabad



Shaukat Khaum Memorial, Lahore



Quaid-e-Azam Library, Lahore

5 Marla Villas

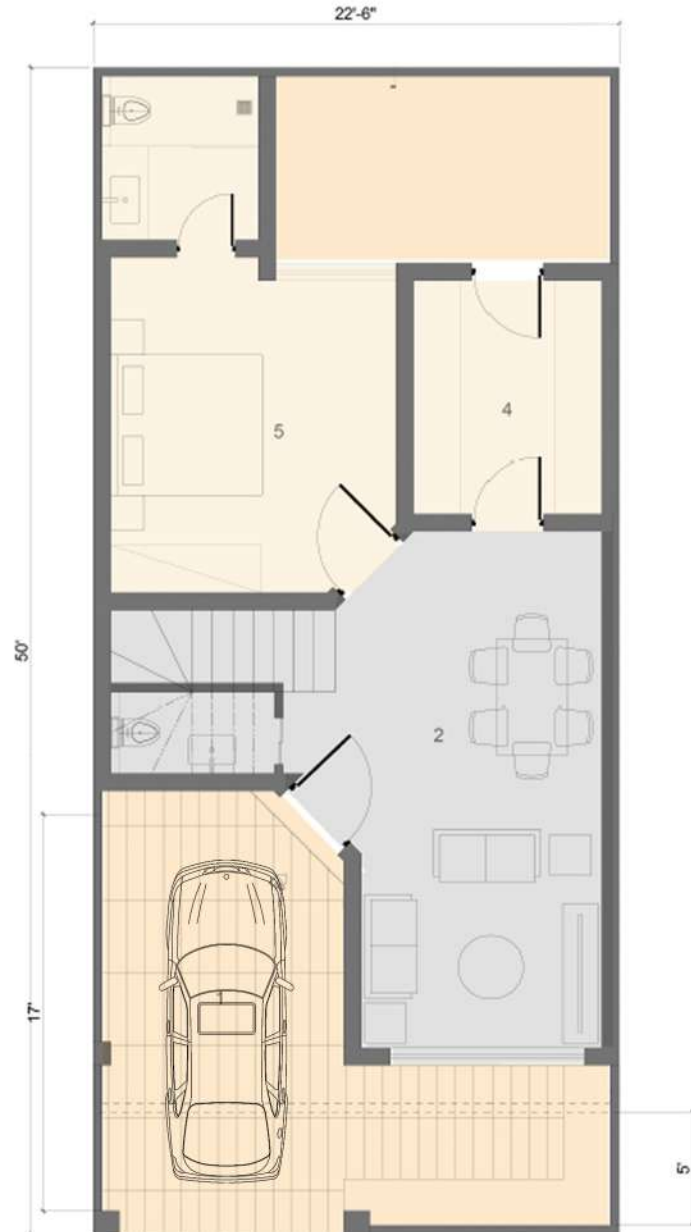
This flawless 4-bedroom villa is built-up on 2186 Sqft of usable space, offering huge lounges, beautiful perspectives and a comfortable parking area. The numerous indoor and outside highlights are great for family living.







Floor Plans



Ground Floor

TOTAL COVERED AREA 839 SQFT	
1. VERANDA	10'-4 1/2" x 11'-9"
2. LIVING/DINING	13'-9" x 22'-0"
3. POWDER	7'-0" x 3'-6"
4. KITCHEN	8'-0" x 10'-0"
5. BEDROOM	12'-3" x 14'-4"
6. BATHROOM	6'-8" x 7'-0"

The Total Covered Area of 5 Marla Villa is 2186 sqft

Floor Plans

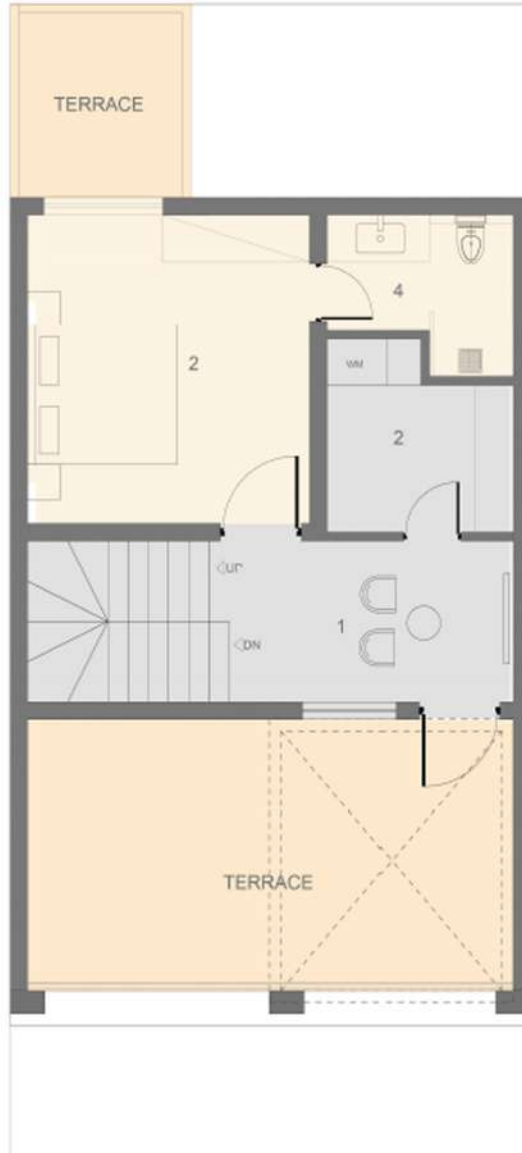


First Floor

**TOTAL COVERED AREA
839 SQFT**

1. LIVING / STUDY	12'-3" x 14'-8"
2. BEDROOM	16'-3" x 11'-0"
3. BATHROOM	6'-14/2" x 11'-0"
4. BEDROOM	12'-3" x 14'-4"
5. BATHROOM	6'-8" x 7'-0"
6. TERRACE	8'-0" x 6'-0"

Floor Plans



Second Floor

TOTAL COVERED AREA 508 SQFT	
1. LIVING	12'-3" x 6'-10"
2. BEDROOM	12'-3" x 16'-4"
3. STORE/LAUNDRY	8'-4" x 8'-0"
4. BATHROOM	8'-0" x 7'-0"

5 YEARS PAYMENT PLAN 5 MARLA VILLAS

Size	Marla	Villa type	Total Price	Down Payment (20%) 30 th January, 2023	Monthly Instalments (16) Starting 28 th Feb, 2023	Payment on Possession (15%) After 1.5 Years	Monthly Instalments (42) After Possession
2186 sqft	05	04 Bedroom	28,400,000/-	5,680,000/-	318,276/-	4,260,000/-	318,276/-

*Premium is applicable on corner and park-facing units

*terms and conditions apply



BOOKING OFFICE

LAKE CITY HEAD OFFICE
13-KM RAIWIND ROAD, LAHORE

SALES CENTER

UAN : 042 111 000 096