



# LAKE CITY DOWNTOWN



**8 MARLA COMMERCIAL BUILDINGS**

**2 YEAR PAYMENT PLAN**



# LAKE CITY INTERCHANGE, RING ROAD



BOOKING OFFICE

**2ND FLOOR, LAKE CITY MALL,**  
LAKECITY, LAHORE, PAKISTAN

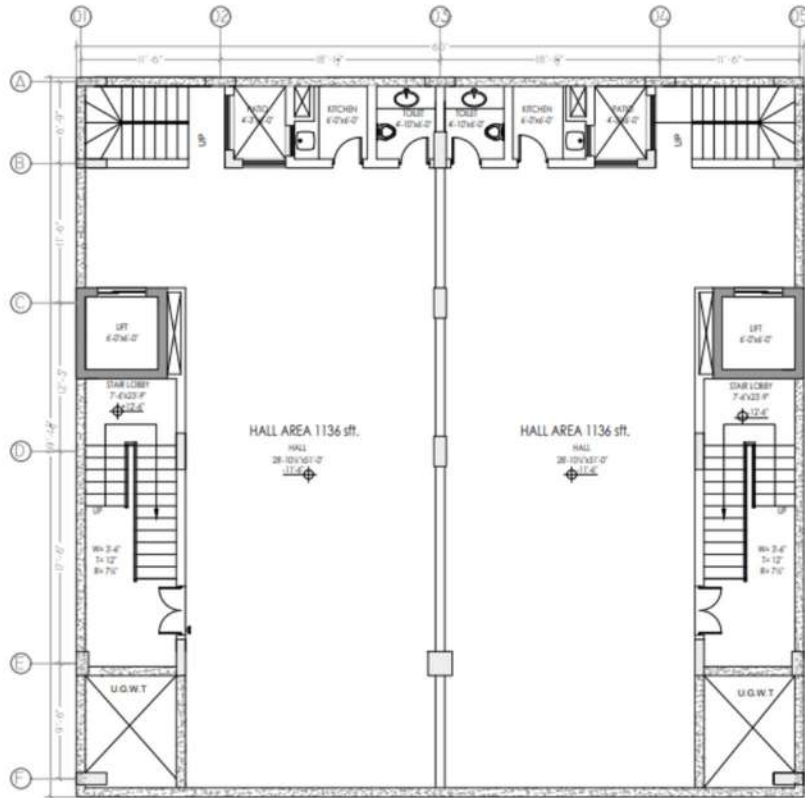
SALES CENTER

**UAN: 042 111 444 999**

BOOKING OFFICE

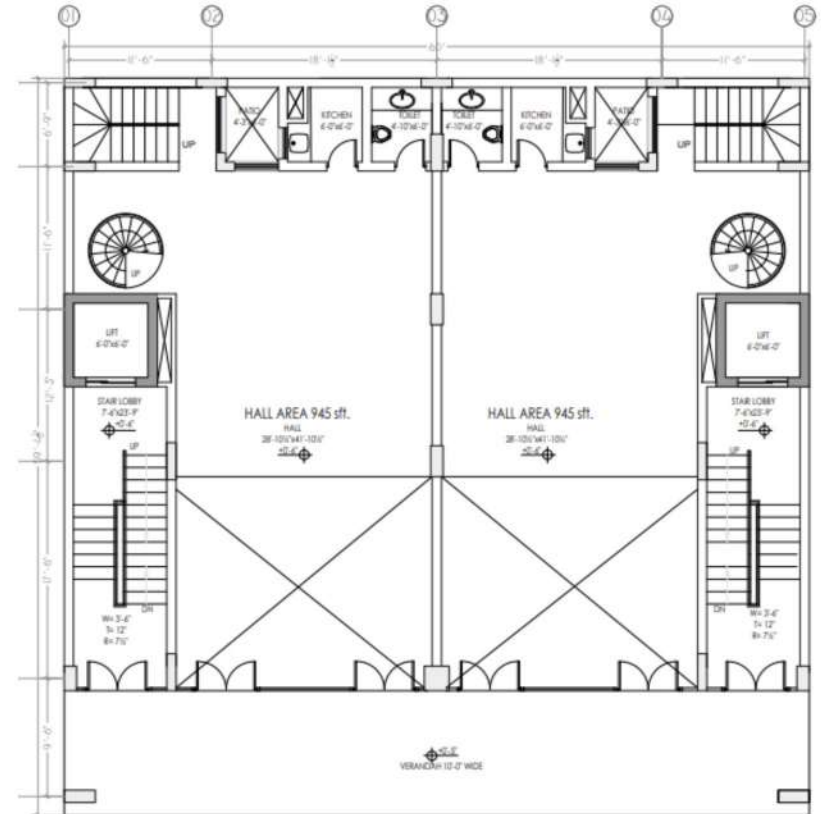
**LAKE CITY HEAD OFFICE**  
13-KM RAIWIND ROAD, LAHORE

### Basement Floor Plan :



Covered Area = 1755 sqft

### Ground Floor Plan :



Covered Area = 1445 sqft

BOOKING OFFICE

**2ND FLOOR, LAKE CITY MALL,**  
LAKECITY, LAHORE, PAKISTAN

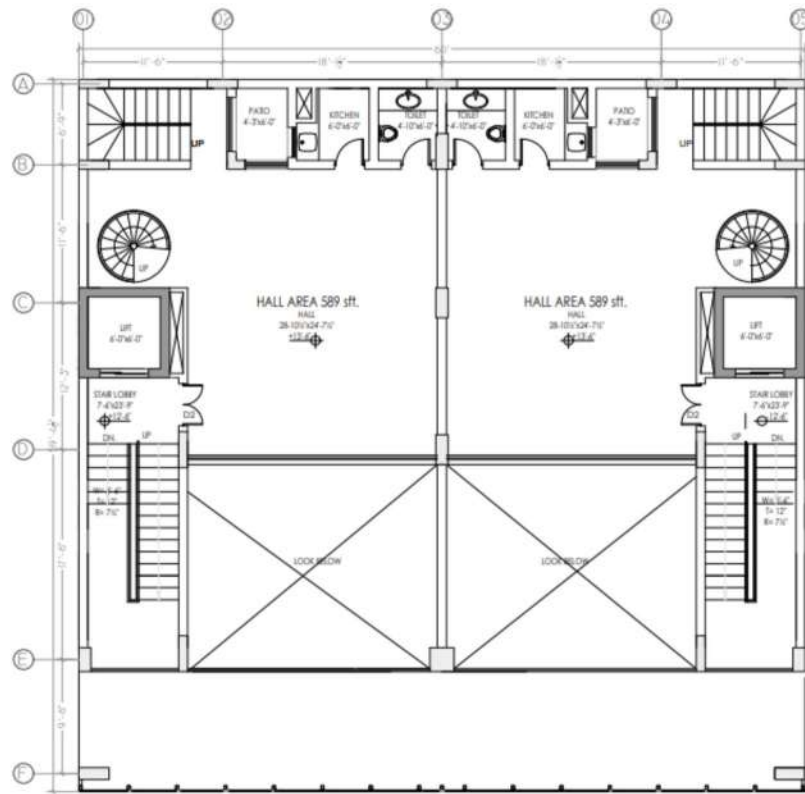
SALES CENTER

**UAN: 042 111 444 999**

BOOKING OFFICE

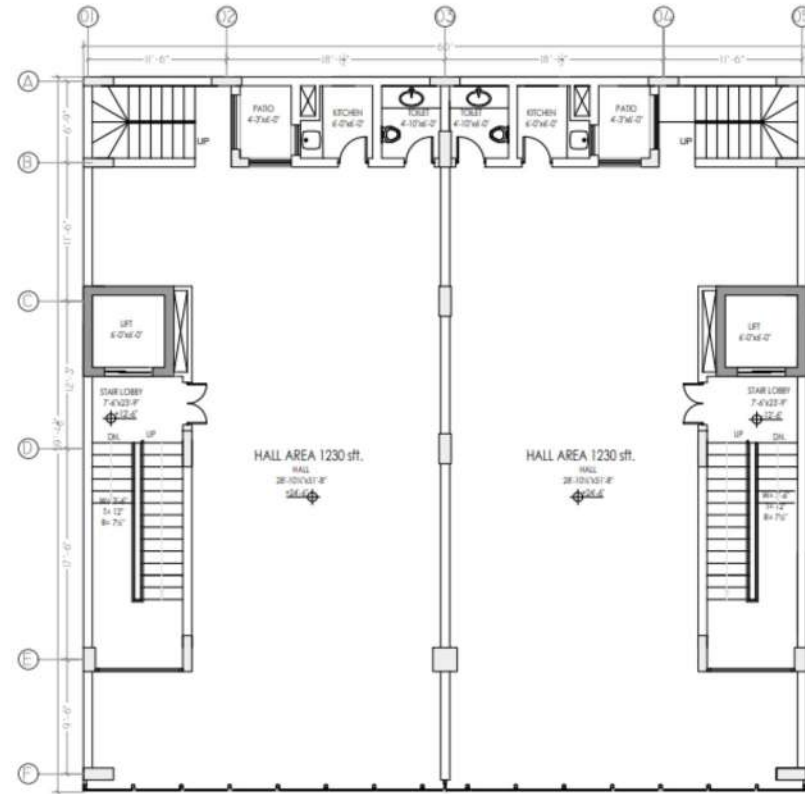
**LAKE CITY HEAD OFFICE**  
13-KM RAIWIND ROAD, LAHORE

### Mezzanine Floor Plan :



Covered Area = 1093sqft

### First Floor Plan :



Covered Area = 1755 sqft

BOOKING OFFICE

**2ND FLOOR, LAKE CITY MALL,**  
LAKECITY, LAHORE, PAKISTAN

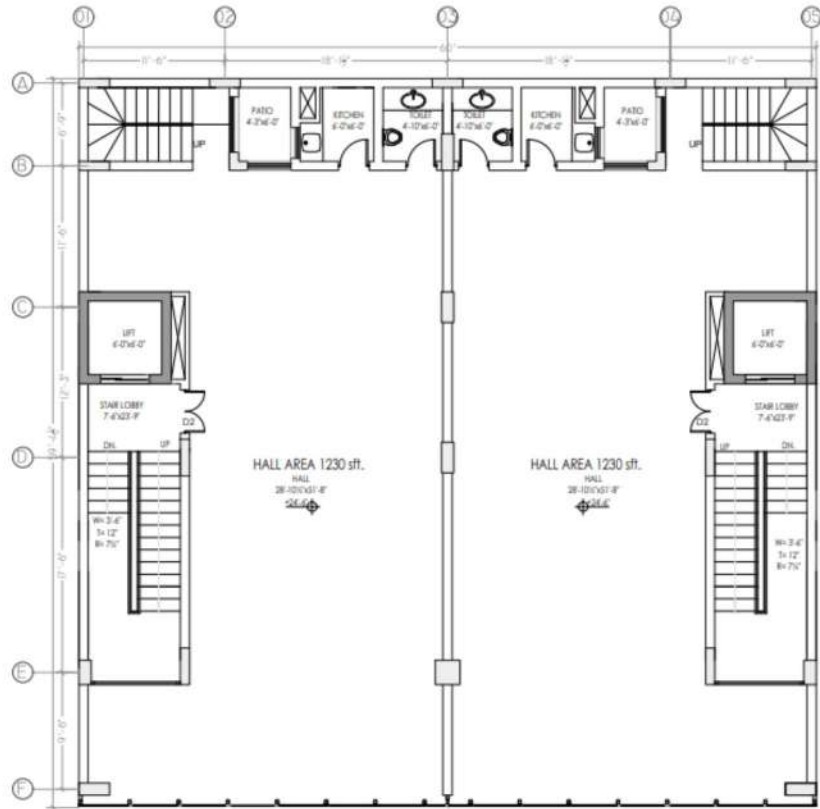
SALES CENTER

**UAN: 042 111 444 999**

BOOKING OFFICE

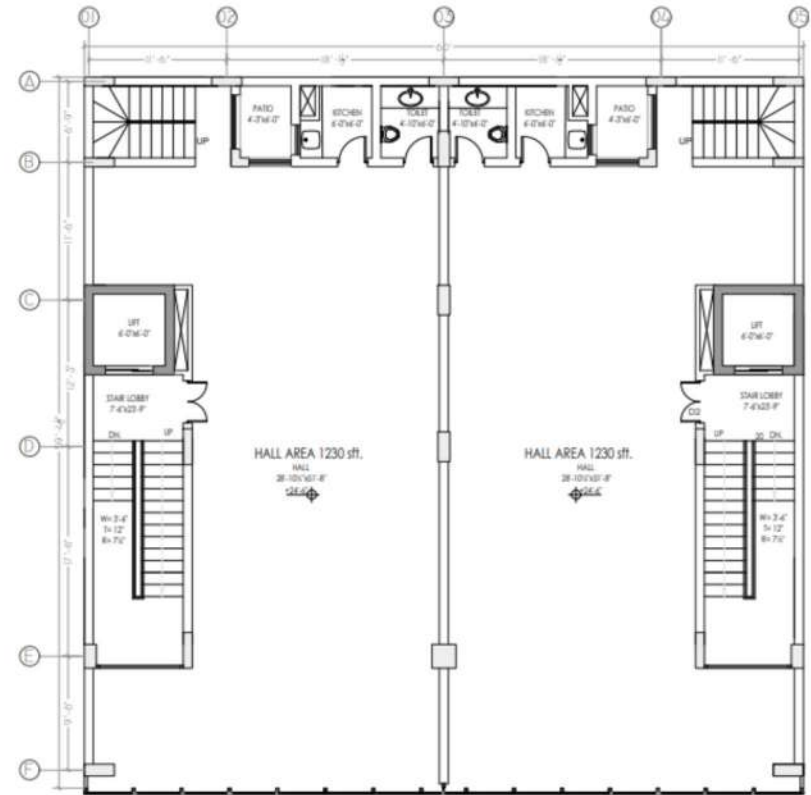
**LAKE CITY HEAD OFFICE**  
13-KM RAIWIND ROAD, LAHORE

## Second Floor Plan :



Covered Area = 1755sqft

## Third Floor Plan :



Covered Area = 1755 sqft

BOOKING OFFICE

**2ND FLOOR, LAKE CITY MALL,**  
LAKECITY, LAHORE, PAKISTAN

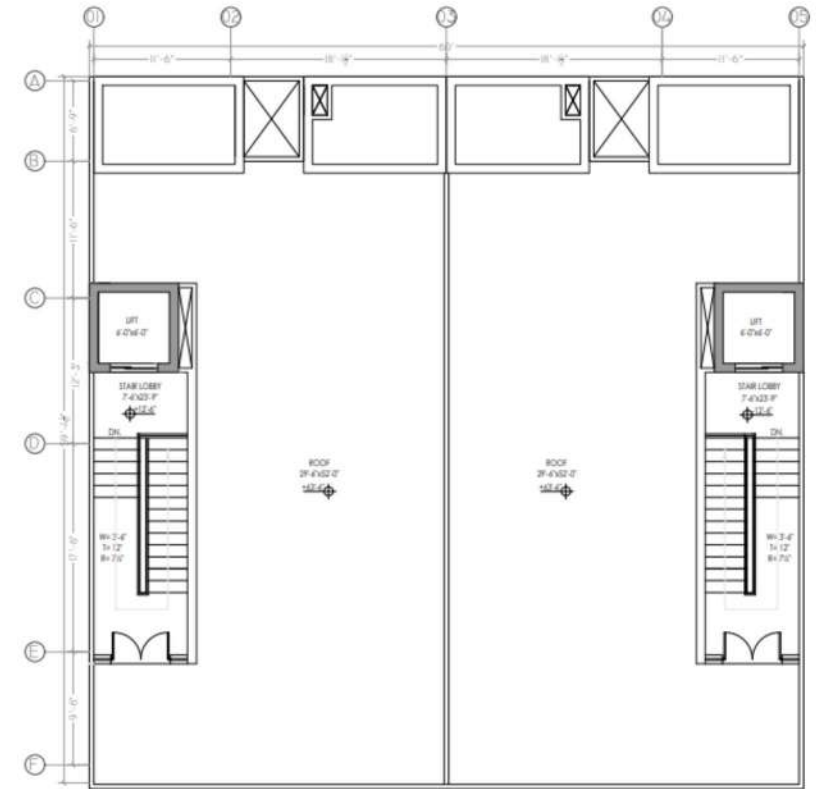
SALES CENTER

**UAN: 042 111 444 999**

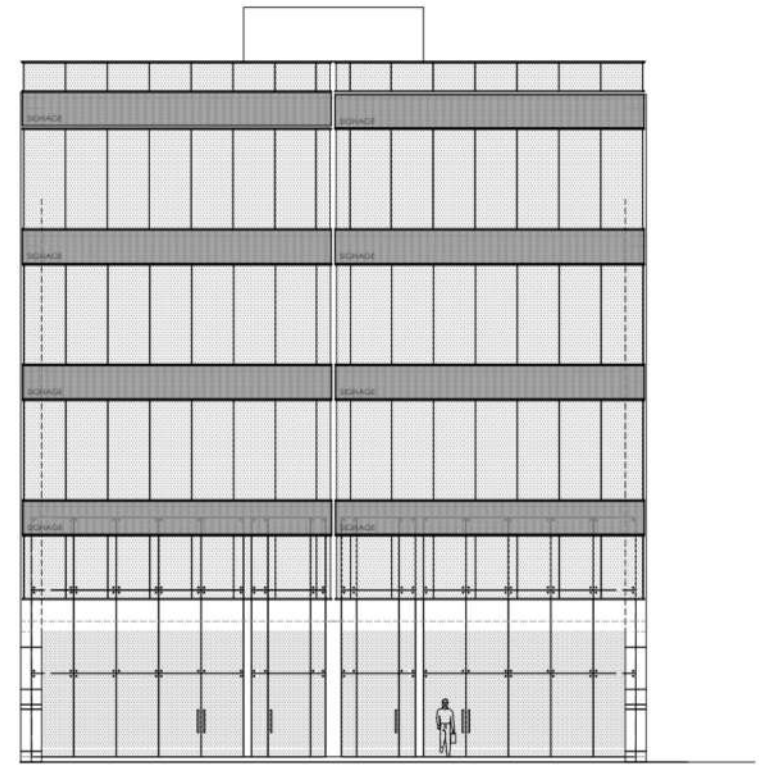
BOOKING OFFICE

**LAKE CITY HEAD OFFICE**  
13-KM RAIWIND ROAD, LAHORE

## Roof Plan :



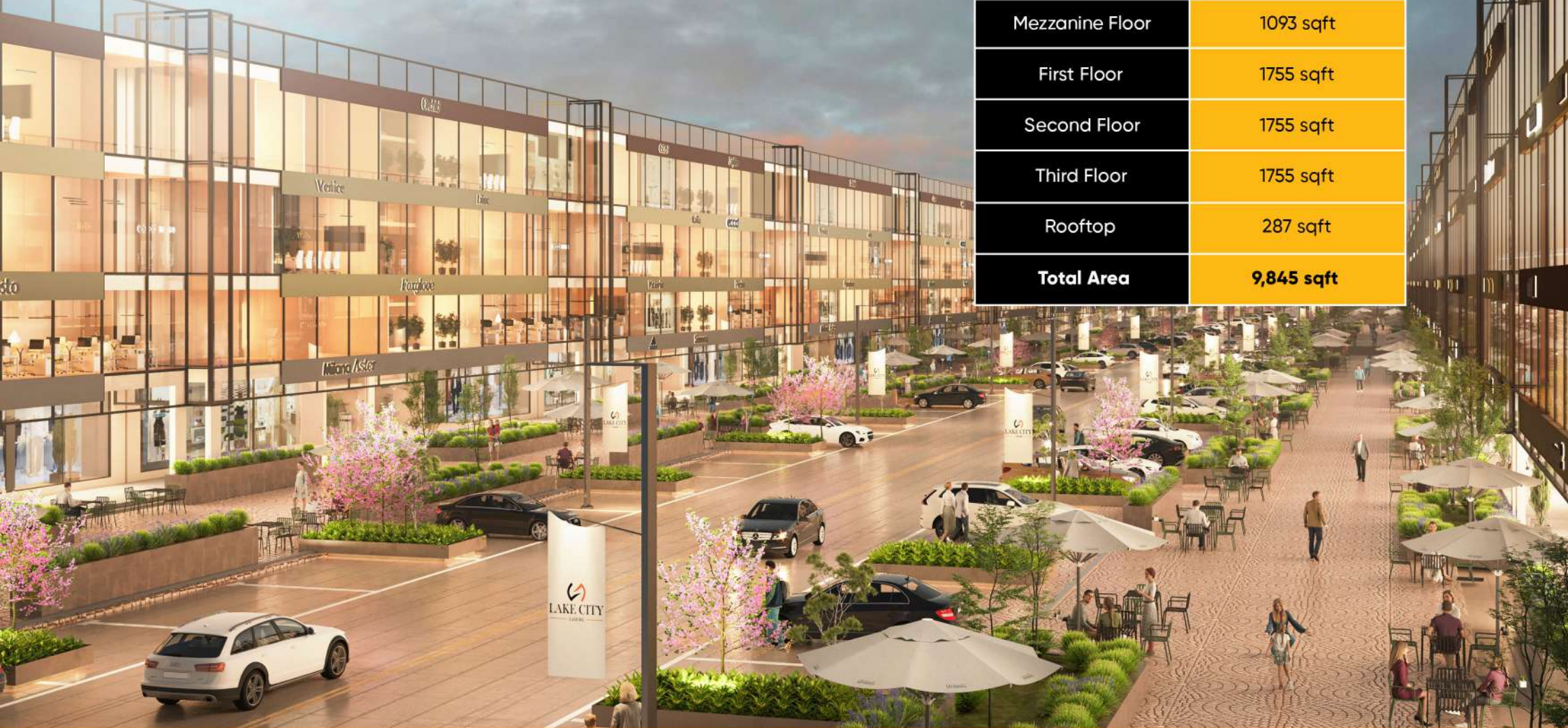
Covered Area = 287sqft



Elevation



# LAKE CITY DOWNTOWN



Area Statement	
Floor	Covered Area
Basement Floor	1755 sqft
Ground Floor	1445 sqft
Mezzanine Floor	1093 sqft
First Floor	1755 sqft
Second Floor	1755 sqft
Third Floor	1755 sqft
Rooftop	287 sqft
<b>Total Area</b>	<b>9,845 sqft</b>

BOOKING OFFICE

**2ND FLOOR, LAKE CITY MALL,**  
LAKECITY, LAHORE, PAKISTAN

SALES CENTER

**UAN: 042 111 444 999**

BOOKING OFFICE

**LAKE CITY HEAD OFFICE**  
13-KM RAIWIND ROAD, LAHORE

**PAYMENT PLAN :**



Size	Type	Total Price (PKR)	Down Payment (PKR)	Quarterly Instalments (8) (PKR)
08 Marla	Commercial	300,000,000/-	75,000,000/-	28,125,000/-

\*Application Forms are available from Lake City Office (13-KM Raiwind Road, Lahore) on deposit of 10,000/-

\*10 % Premium will be charges on Corner Building

\*Applicable with Holding Tax to be Paid

BOOKING OFFICE

**2ND FLOOR, LAKE CITY MALL,**  
LAKECITY, LAHORE, PAKISTAN

SALES CENTER

**UAN: 042 111 444 999**

BOOKING OFFICE

**LAKE CITY HEADOFFICE**  
13-KM RAIWIND ROAD, LAHORE